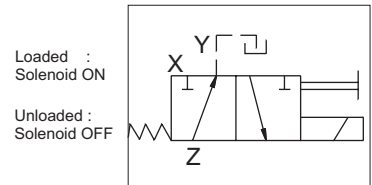
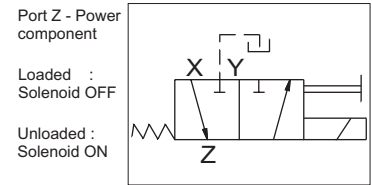


Veljan Vent valve VVV01 are electrically operated 3/2 way devices and are compatible with **VELJAN** pilot operated pressure controls and 2-way seat valves. Due to sandwich design, these vent valves can be easily installed into existing valves. No extra components such as subplates, fittings and piping are required.

VVV01 sandwiched between the power component or main body and the pilot section or cap of the valve it is controlling, directs the pilot oil to the power component to allow its designated function at system pressure, or to the pilot oil return to allow unloading. Two different control spools are available for the functions. These are for "Power component unloaded in normal position" and "Power component unloaded in switch position". Solenoids are with manual override and leakproof function. Coils can be changed without interfering with the hydraulic circuit.



PC

SPECIFICATIONS

General

Type	:	3/2 - Vent Valve
Mounting position	:	Optional but horizontal recommended
Port sizes (nominal)	:	Identical with VELJAN Pilot Valve series VR4, VR5, VD4S and VCAR
Ambient temperature	:	-20°C...+ 60°C (-4°F...+140°F)
Special working conditions	:	Consult VELJAN

Hydraulics

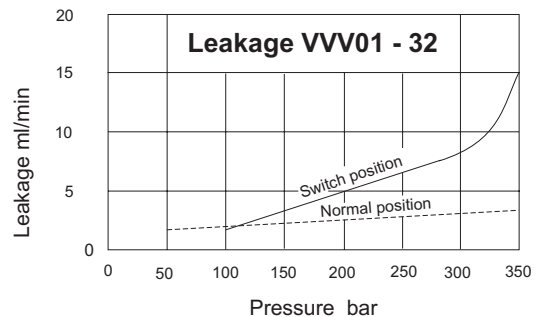
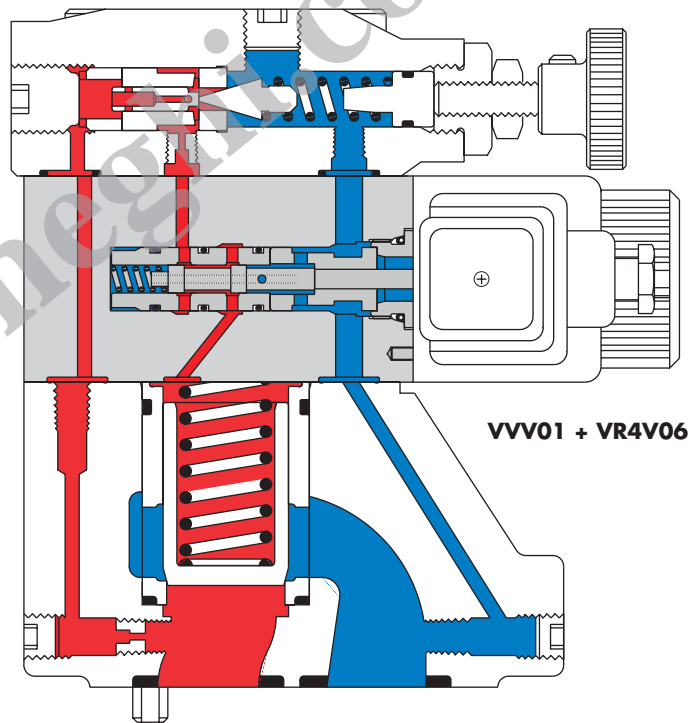
Pressure control range	:	
-Port X (pilot)	:	5000 psi (350 bar)
-Port Y (drain)	:	2030 psi (140 bar)
Nominal flow gpm (lpm)	:	1.0 (3.8)
Fluid Temperature Range	:	-18°C...+ 80°C (0°F...+ 176°F)
Optimum operating viscosity	:	30 cSt (180 SSU)
Overlap	:	Positive

Actuation

Electric	:	By Solenoid
Type of current	:	AC or DC
Nominal voltage	:	Refer to Ordering Code
Permissible voltage fluctuation	:	+5%...-10%
Max. coil temperature	:	+155°C (311°F)
Input power	:	31 W
Holding	:	78 VA
Inrush	:	264 VA
Relative operating period	:	100%
Type of protection	:	IP 65

Response time

	:	AC	DC
Solenoid energized	:	20 ms	46 ms
Solenoid de-energized	:	18 ms	27 ms
Cycle	:	...7200 /h	...16000 /h



ORDERING CODE

VVV01 - 3 1 1 - W07 - D - 1

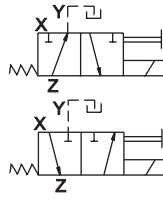
Series

Type

3 - 3-way model

Spool position

- 1 - Normal position : free flow from Z to Y
switch position : X to Z
- 2 - Normal position : X to Z
Switch position : free flow from Z to Y



Control

- 1 - plug - in - type solenoid with manual over-ride
 - 2 - plug - in - type solenoid without manual over-ride
 - D - Pneumatic
 - Q - Hydraulic
- On request

Seal Class

- 1 - Buna N (Standard)
- 5 - Viton

Design letter

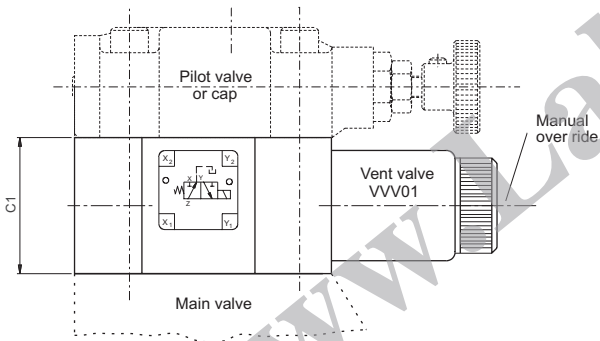
- D - AC Solenoid
- E - DC Solenoid

Solenoid Voltage

- W01 - 115V/60 Hz AC
- W02 - 230V/60 Hz AC
- W06 - 115V/50 Hz AC
- W07 - 230V/50 Hz AC
- GOR - 12V DC
- GOQ - 24V DC
- GOH - 48V DC

Installation

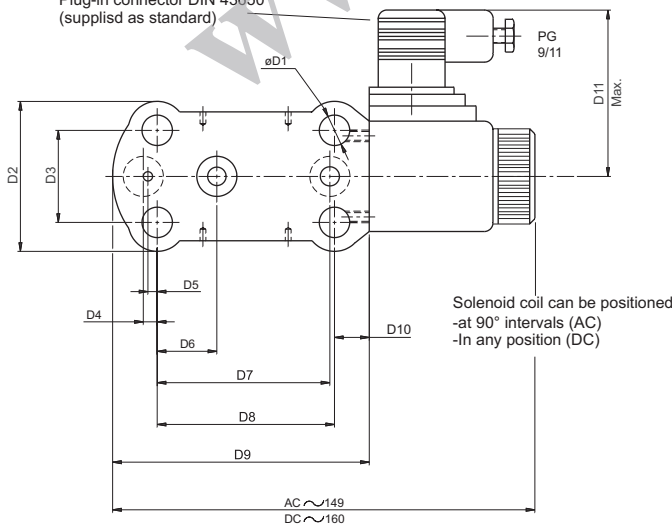
Weight (VVV01) : 3.73 lbs (1.7 kg)



Note :
For VVV01 with DC solenoid,
plug-in connectors must be
ordered separately.



Plug-in connector DIN 43650
(supplied as standard)



Solenoid coil can be positioned
-at 90° intervals (AC)
-In any position (DC)

Versions	
Standard < 250 VPG 11	V167-01008-8
With LED (red) 15 .. 30 V	V167-01101-8
With bridge rectifier 12 .. 250 V	V167-01014-8

Dimensions		
	in	mm
C1	1.85	47.0

	Dimensions	
	in	mm
D1	ø0.41	ø10.5
D2	2.03	51.8
D3	1.25	31.8
D4	0.18	4.8
D5	0.12	3.2
D6	0.81	20.6
D7	2.31	58.7
D8	2.37	60.3
D9	3.49	88.7
D10	0.51	13.0
D11	2.75	70.0